

gofanco®

PRO-Scaler2HD

HDMI/DP/VGA/CVBS/YPbPr to HDMI Scaler Converter

User's Guide



Congratulations for owning a gofanco product. Our products aim to meet all your connectivity needs wherever you go.

Have fun with our products!

Please read this manual carefully before first use.

If you need more information about our products, please visit www.gofanco.com.

For technical support, please email us at support@gofanco.com.

For drivers/manuals download, please go to <http://www.gofanco.com/download>.

Table of Contents

1. Safety and Notice	3
2. Introduction	4
3. Features	4
4. Package Contents	4
5. Specification	5
6. Connection Diagram	6
7. Panel Description	7
8. OSD Menu	8
9. Operation Approach	9
10. Limited Warranty	13

1. Safety and Notice

Please read all of these instructions carefully before you use the device. Save this manual for future reference.

The **PRO-Scaler2HD HDMI/DP/VGA/CVBS/YPbPr to HDMI Scaler Converter** has been tested for conformance to safety regulations and requirements, and has been certified for international use. However, like all electronic equipments, the PRO-Scaler2HD should be used with care. Please read and follow the safety instructions to protect yourself from possible injury and to minimize the risk of damage to the unit.

- Follow all instructions and warnings marked on this unit.
- Do not attempt to service this unit yourself, except where explained in this manual.
- Provide proper ventilation and air circulation and do not use near water.
- Keep objects that might damage the device and assure that the placement of this unit is on a stable surface.
- Use only the power adapter and power cords and connection cables designed for this unit.
- Do not use liquid or aerosol cleaners to clean this unit. Always unplug the power to the device before cleaning.

2. Introduction

The **PRO-Scaler2HD HDMI/DP/VGA/CVBS/YPbPr to HDMI Scaler Converter** provides a professional way to scale and convert multiple format (HDMI/DP/VGA/CVBS/YPbPr) to HDMI compliant format. This device supports video conversion and scaling from analog & digital to HDMI. With PRO-Scaler2HD, the bothersome video format issues will not become a bottleneck in your applications and the handy audio support can make the input video and audio become HDMI ready.

3. Features

- Supported Input: HDMI/DP/ VGA/CVBS/YPbPr
- Input maximum pixel rate: 165MHz
- Output resolution up to 4K/30 444
- Supports multiple VESA resolutions
- Supports video enhancement features
- IR remote control
- Push button control
- Software control via Micro-USB
- OSD control interface
- Deinterlacing supported
- Video H/V mirror supported
- Over / under scanning adjustable
- Active video area adjustment supported
- Stable and independent output signal quality
- USB firmware upgradable for expanded compatibility
- Wall-mount housing design for easy installation

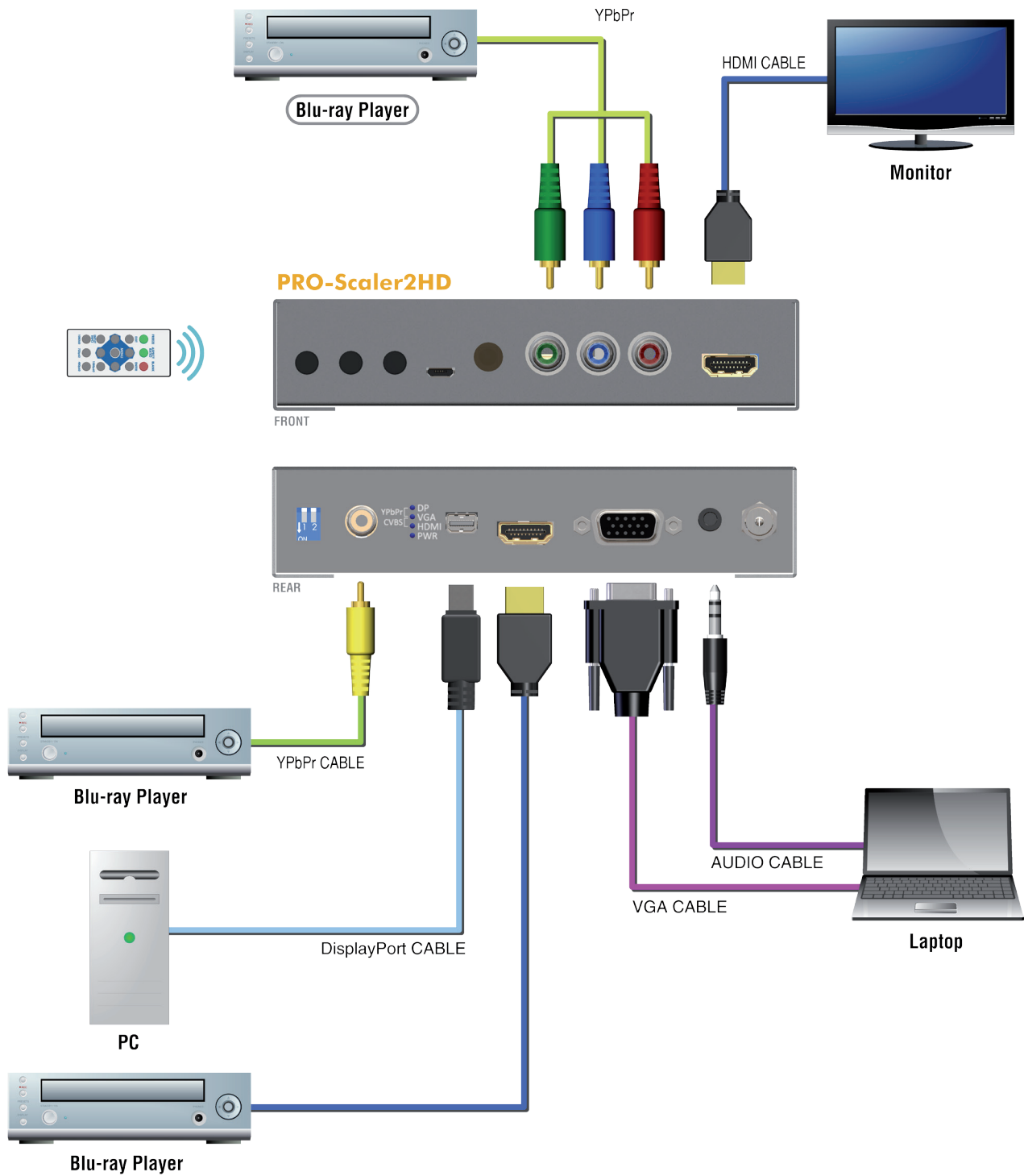
4. Package Contents

- 1x PRO-Scaler2HD
- 1x 12V/2A power supply unit
- 1x IR Remote control
- 2x Ear mount
- 1x User Manual
- 1x Installation software CD

5. Specifications

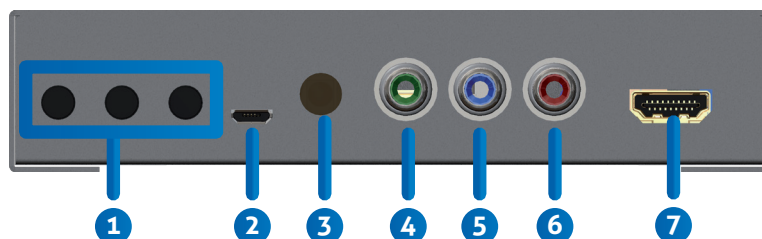
Item		Description
Technical		
Role of usage		HDMI/DP/VGA/CVBS/YPbPr to HDMI Converter
HDMI standards		HDMI 1.4
Input Video Maximum Pixel Rate		165MHz
Output Video bandwidth		10.2Gbps
Output Video support		up to 4K2K@30 4:4:4
Audio support		PCM 2 (32KHz~192KHz Fs sample rate)
ESD protection		[1] Human body model — $\pm 19\text{kV}$ [air-gap discharge] & $\pm 12\text{kV}$ [contact discharge] [2] Core chipset — $\pm 2\text{kV}$
PCB stack-up		4-layer board [impedance control — differential 100 Ω ; single 50 Ω]
Firmware update		Feasible via USB Port
CEC Channel		N/A
Input		1x HDMI + 1x VGA + 1x DP + 1x RCA + 1x YPbPr + 1x stereo(for VGA)
Output		1x HDMI
HDMI connector		Type A [19-pin female]
USB connector		Micro B
Mechanical		
Housing		Metal enclosure
Dimensions [L x D x H]	Model	114 x 108 x 26mm[4.5" x 4.3" x 1"]
	Package	264 x 170 x 77mm[10.3" x 6.7" x 3"]
	Carton	430 x 358 x 291mm[1'4" x 1'2" x 11.5"]
Weight	Model	264g[9.3 oz]
	Package	724g[1.6 lbs]
Fixedness		Wall-mounting case with screws
Power supply		12V 2A DC
Power consumption		6 Watts [max]
Operation temperature		0~40°C [32~104°F]
Storage temperature		-20~60°C [-4~140°F]
Relative humidity		20~90% RH [no condensation]

6. Connection Diagram



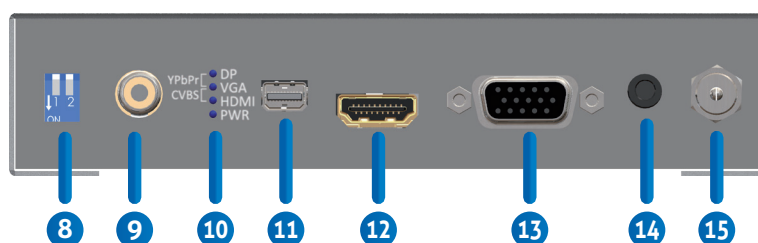
7. Panel Description

Front Panel



1. **PUSH BUTTON**
[LEFT]: Down Button
[MID]: Up Button
[RIGHT]: Menu/Enter Button
2. **Micro USB:** Firmware update and software control port
3. **IR SENSOR:** IR sensor for receiving the IR commands from IR remote
4. **COMPONENT – Y INPUT**
5. **COMPONENT – Pb INPUT**
6. **COMPONENT – Pr INPUT**
7. **HDMI OUTPUT:** Connect to a HDMI display

Rear Panel



8. **DIP SWITCH:**
PIN 1: F/W update
PIN 2: Reserved
9. **CVBS INPUT**
10. **LED INDICATOR:**

Signal					Power
DisplayPort	VGA	HDMI	YPbPr	CVBS	Power

11. **Mini DP INPUT**
12. **HDMI INPUT**
13. **VGA INPUT**
14. **STEREO AUDIO INPUT (for VGA):** connect to analog stereo audio source
15. **DC 12V:** Interlocking power jack for DC 12V power supply unit

8. OSD Menu

1. Output Setup	Output Format	
	Test Pattern	Disable, White, Cross, Hatch, Color, Gray, Windows, H-Ramp, W-HRamp, W-VRamp, Diagonal
	Audio Mute	Off, On
	Input Type	HDMI, VGA, DP, YPbPr, CVBS
	Return	
2. Image	Contrast	0~255 of Contrast Level
	Brightness	0~255 of Brightness Level
	Saturation	0~255 of Saturation Level
	Hue	0~255 of Hue Level
	Gamma Adjust	Off, 1.1, 1.3, 0.7, 0.9
	Color Tone	Off, Green, Skin
	Edge Enhance	Off, Max, Mid, Min
	Sharpness	0~64 of Sharpness Level
	Return	
3. Adjustment	Under/Over Scan	-50%~50% of Scan Level
	Aspect Ratio	Stretch, 16:9, 4:3
	H-Mirror	Off, On
	V-Mirror	Off, On
	H-Shift	-100~100 of H-Shift Level
	V-Shift	-50~50 of V-Shift Level
	Return	
4. System	Input Format	
	F/W Version	
	Factory Reset	
	Return	
5. Exit		

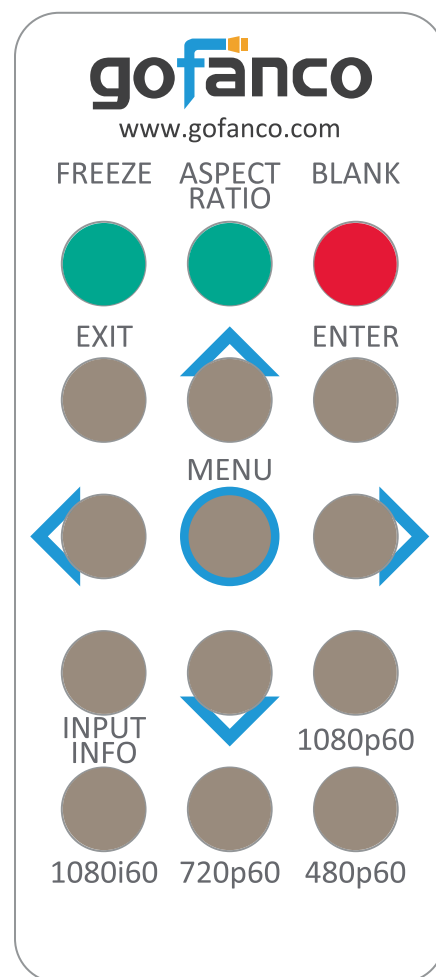
9. Operation Approach

Method A: Push-in Button

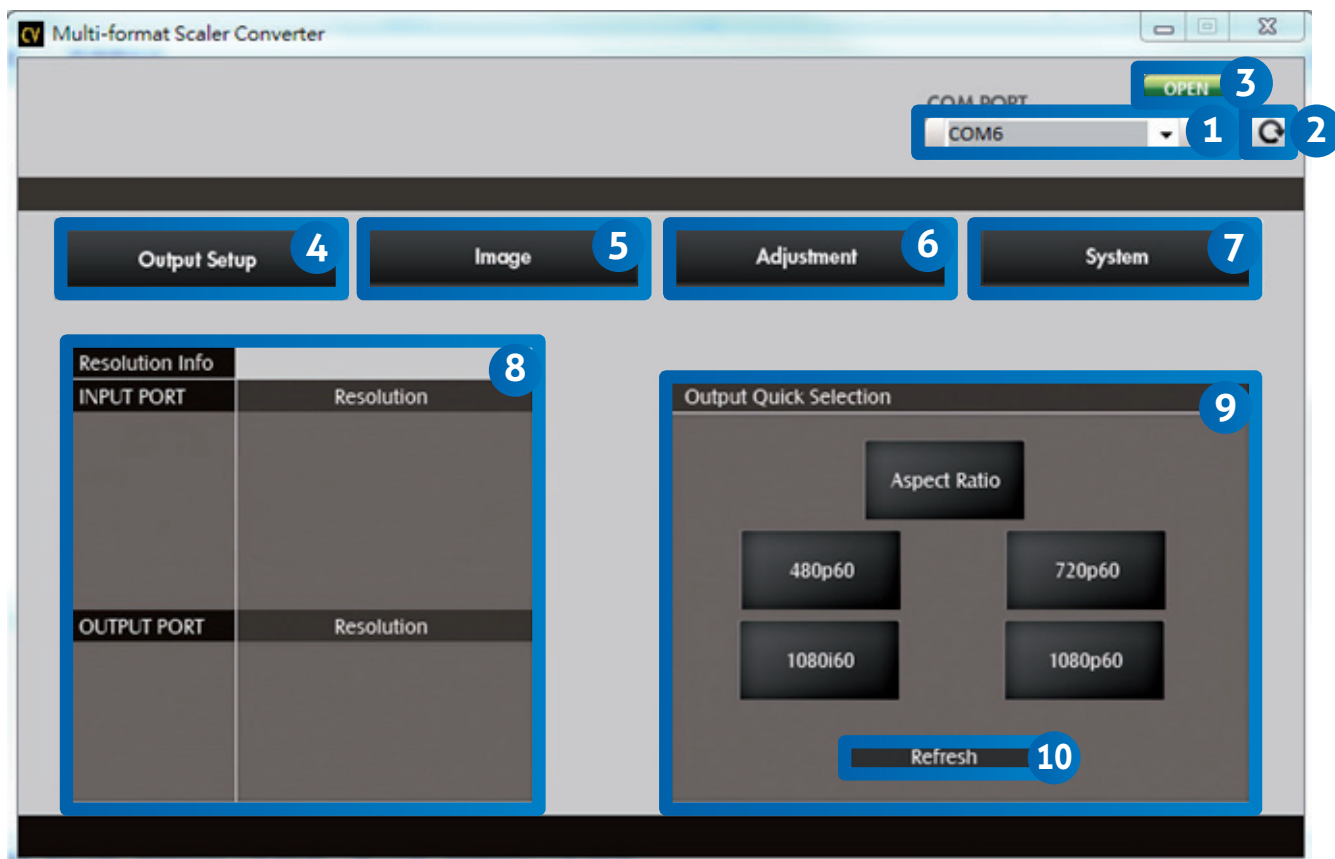


Method B: IR Remote Control

Button	Function
FREEZE	Freeze video
ASPECT RATIO	Aspect ratio change
BLANK	Blank video
EXIT	Exit OSD
ENTER	Enter key
UP	Up key
LEFT	Left key
RIGHT	Right key
DOWN	Down key
MENU	Menu on
INPUT INFO	Source resolution information
1080p60	Select 1080p60 output resolution
1080i60	Select 1080i60 output resolution
720p60	Select 720p60 output resolution
480p60	Select 480p60 output resolution



Method C: IR Remote Control through Micro-USB port



1	COM Port Selection
2	COM Port Detection Button
3	Connect/Disconnect Button
4	Output Setup Button
5	Image Button
6	Adjustment Button
7	System Button
8	Input / Output Resolution Info
9	Output Quick Selection Button
10	Refresh Input / Output Resolution Info Button

1. COM Port Selection

Please select the application COM PORT



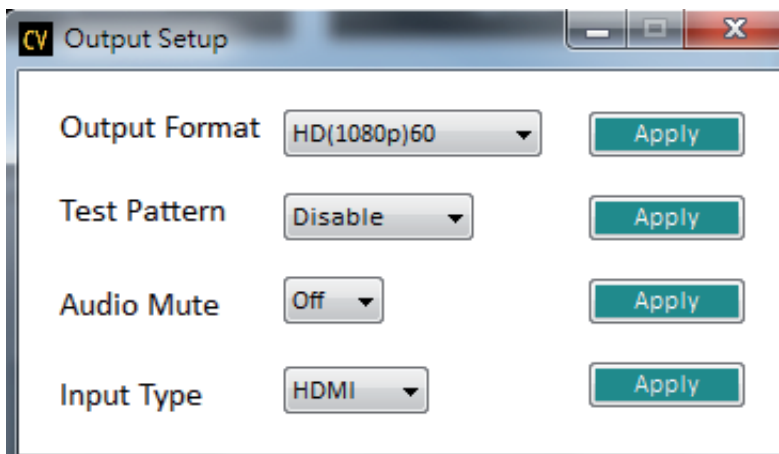
2. COM Port Detection Button

Click this button  to detect the COM PORT

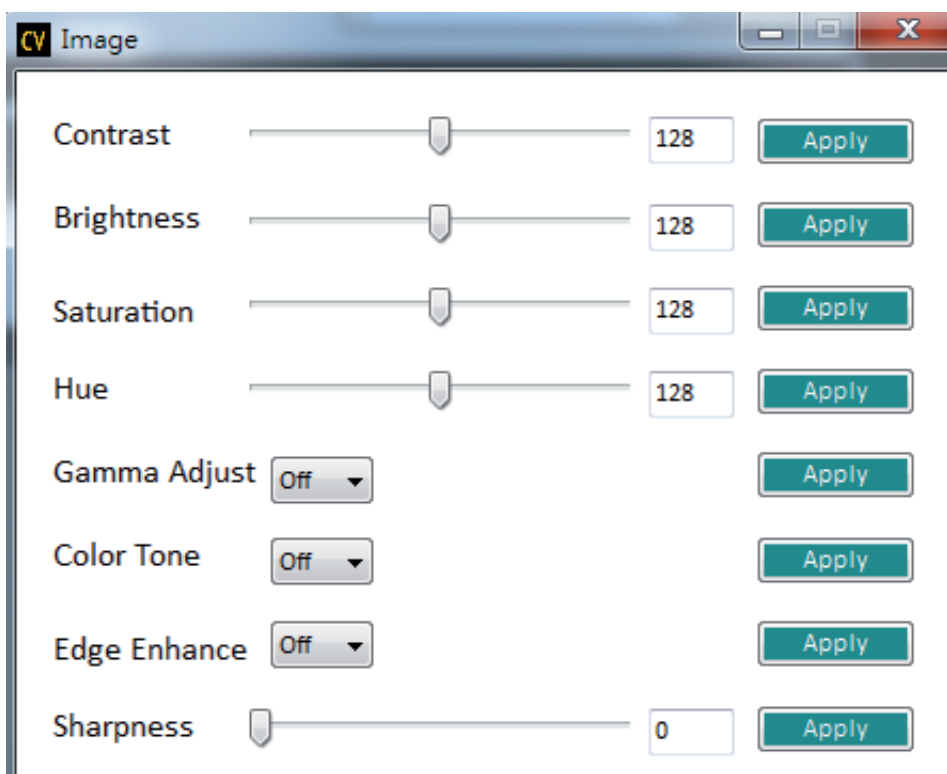
3. Connect/Disconnect Button

- 1) Click this button  to connect
- 2) Click this button  to disconnect

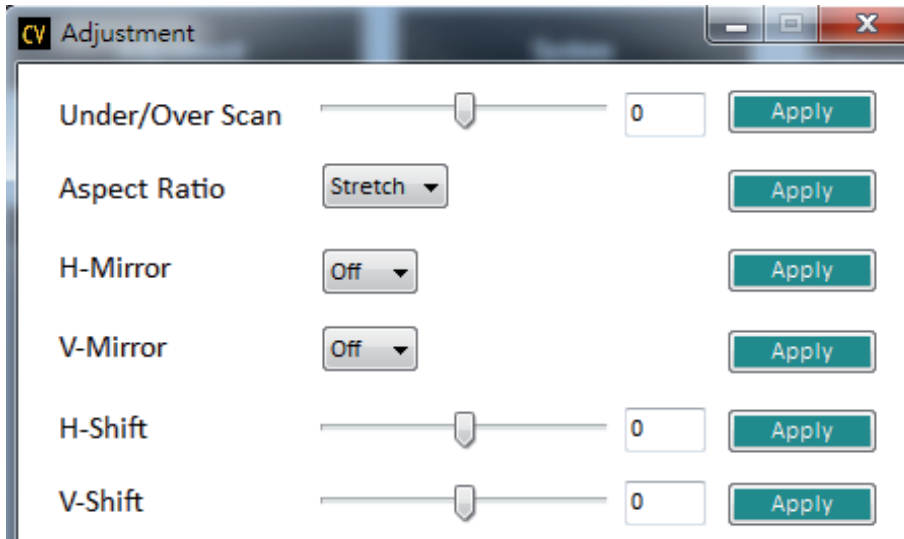
4. Output Setup Button



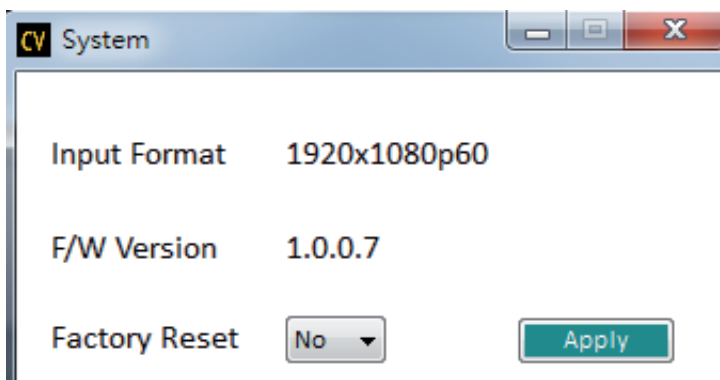
5. Image Button



6. Adjustment Button



7. System Button



- 1) Input Format: To view the current input resolution
- 2) F/W Version Information
- 3) Factory Reset Button

8. I/O Port and Resolution Info

To display the information about the I/O Port and the applied Resolution

9. Output Quick Selection Button

Common functions for quick setting

10. Refresh Button

To refresh the status of the converter

10. Limited Warranty

The SELLER warrants the **PRO-Scaler2HD HDMI/DP/VGA/CVBS/YPbPr to HDMI Scaler Converter** to be free from defects in the material and workmanship for 1 year from the date of purchase from the SELLER or an authorized dealer. Should this product fail to be in good working order within 1 year warranty period, The SELLER, at its option, repair or replace the unit, provided that the unit has not been subjected to accident, disaster, abuse or any unauthorized modifications including static discharge and power surges.

Unit that fails under conditions other than those covered will be repaired at the current price of parts and labor in effect at the time of repair. Such repairs are warranted for 90 days from the day of reshipment to the BUYER. If the unit is delivered by mail, customers agree to insure the unit or assume the risk of loss or damage in transit. Under no circumstances will a unit be accepted without a return authorization number.

The warranty is in lieu of all other warranties expressed or implied, including without limitations, any other implied warranty or fitness or merchantability for any particular purpose, all of which are expressly disclaimed.

Proof of sale may be required in order to claim warranty. Customers outside Taiwan are responsible for shipping charges to and from the SELLER. Cables are limited to a 30 day warranty and cable must be free from any markings, scratches, and neatly coiled.

The content of this manual has been carefully checked and is believed to be accurate. However, The SELLER assumes no responsibility for any inaccuracies that may be contained in this manual. The SELLER will NOT be liable for direct, indirect, incidental, special, or consequential damages resulting from any defect or omission in this manual, even if advised of the possibility of such damages. Also, the technical information contained herein regarding the PRO-Scaler2HD features and specifications is subject to change without further notice.

Disclaimer

The product name and brand name may be registered trademarks of related manufacturers. TM and ® may be omitted on the user's guide. The pictures on the user's guide are just for reference, and there may be some slight differences with the actual products.

We reserve the rights to make changes without prior notice to a product or system described herein to improve reliability, function, or design.



Thank you for choosing gofanco