

gofanco®

PRO-QuadView 4x1 HDMI Quad-Viewer & Seamless Switcher

User's Guide



Congratulations for owning a gofanco product. Our products aim to meet all your connectivity needs wherever you go.

Have fun with our products!

Please read this manual carefully before first use.

If you need more information about our products, please visit www.gofanco.com.

For technical support, please email us at support@gofanco.com.

For drivers/manuals download, please go to <http://www.gofanco.com/download>.

1. Introduction

The PRO-QuadView **4x1 HDMI Quad-Viewer & Seamless Switcher** provides the most flexible and cost effective solution in the market to route high definition video source from any of the four HDMI sources to the remote display at the same time. Besides, this device supports a variety of video layout (5 default modes) and seamless switching in One-View Mode . This solution is well suited for use in digital signage, conference room presentation systems or other similar settings or applications.

With up to FHD output resolution, users can display the resulted mixed video with improved presentation quality. In the meantime, the unit can be controlled thru the IR remote, software and push button control to provide the most flexible control way to fit into any applications.

2. Features

- 4 x HDMI inputs and 1 x HDMI output
- Input resolution supports 480i/480p/576i/576p/720p/1080i/1080p
- Output resolution supports 720p@60 & 1080p@60
- Supports HDCP 1.4
- Supports 5 Display Modes: One-View Mode , Dual-View Mode(left & right), Quad-View Mode, Quad-View Cycled Mode, Quad-View H mode
- Supports seamless switching in One-View Mode

- Supports audio extraction via stereo audio from selected HDMI input
- Supports audio switch function
- Firmware upgradable for support of new features and technology enhancements
- Software control through micro-USB
- Supports IR remote, software and push button control

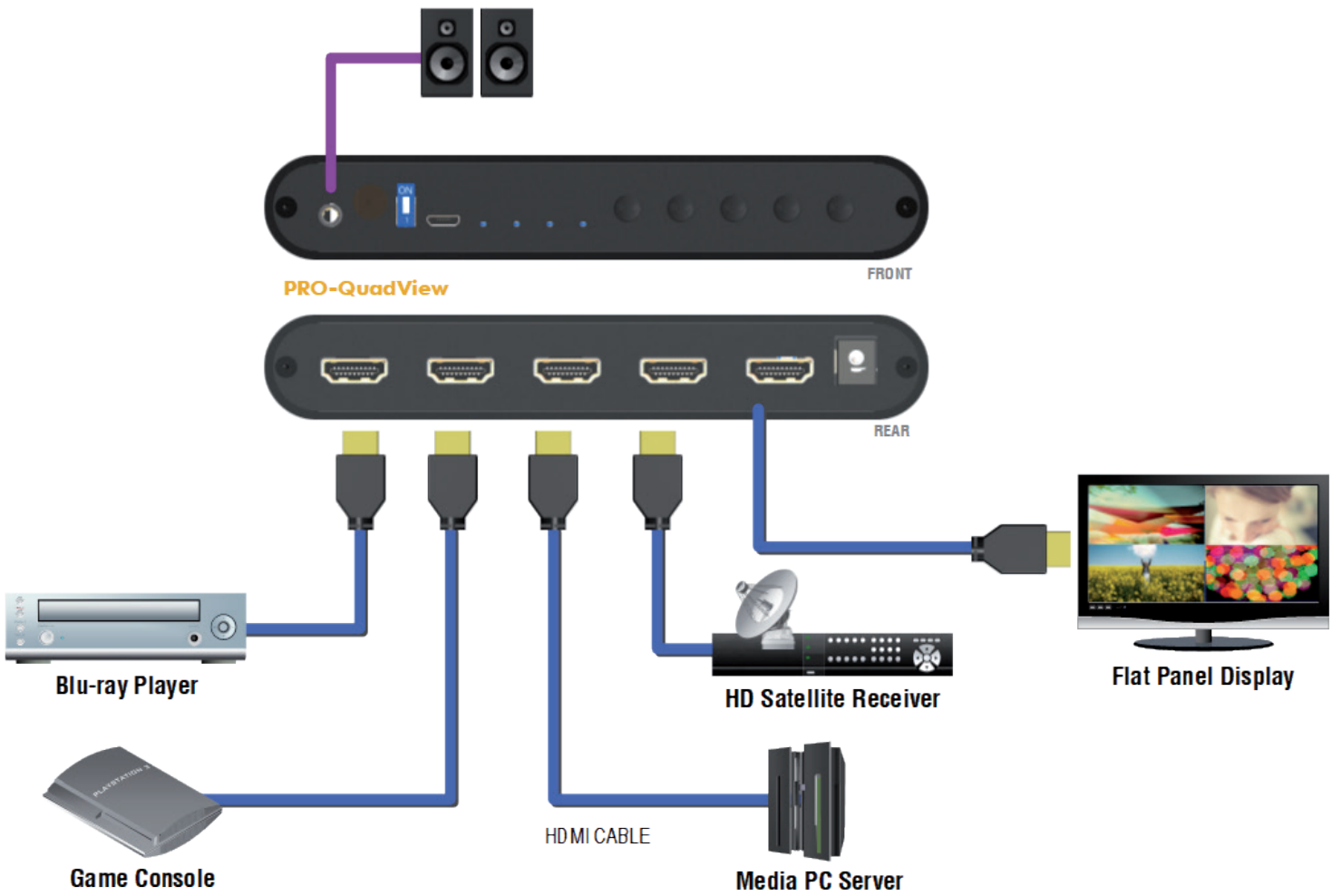
4. Package Contents

- 1x PRO-QuadView
- 1x DC 5V 2A
- 1x IR Remote control (15 keys)
- 1x User Manual

3. Specifications

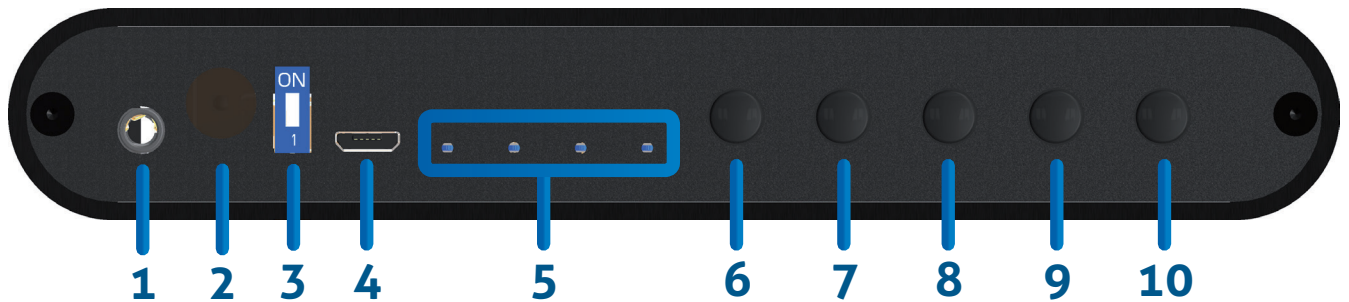
Item		Description
Technical		
Role of usage		Multi-viewer/ video processor
HDCP compliance		HDCP 1.4
Video bandwidth		HDMI [6.75Gbps]
Output Video Support		720p60/ 1080p60
Input Video Support		480i/480p/576i/576p/720p/1080i/1080p
Video Format Support		DVI/HDMI
Audio support		Bypass
Control		IR remote, software and push button control
Embedded video mixer		Yes
Input TMDS signal		1.2 Volts [peak to peak]
ESD protection		Human body model — ±15kV [air-gap discharge] & ±8kV [contact discharge]
Input		4x DVI/HDMI + 1x micro-USB
Output		1x HDMI + 1x 3.5mm phone jack
HDMI connector		Type A [19-pin female]
USB connector		Micro-USB
Mechanical		
Housing		Metal enclosure
Dimensions [L x D x H]	Model	150 x 93 x 24mm [5.9" x 3.7" x 0.9"]
	Package	198 x 137 x 74mm [7.8" x 5.4" x 2.9"]
	Carton	420 x 400 x 300mm [1'4"x 1'3" x 11.8"]
Weight	Model	273g [9.6 oz]
	Package	553g[1.2 lbs]
Power supply		5V 2A DC
Power consumption		5 Watts [max]
Operation temperature		0~40°C [32~104°F]
Storage temperature		-20~60°C [-4~140°F]
Relative humidity		20~90% RH [no condensation]

5. Connection Diagram



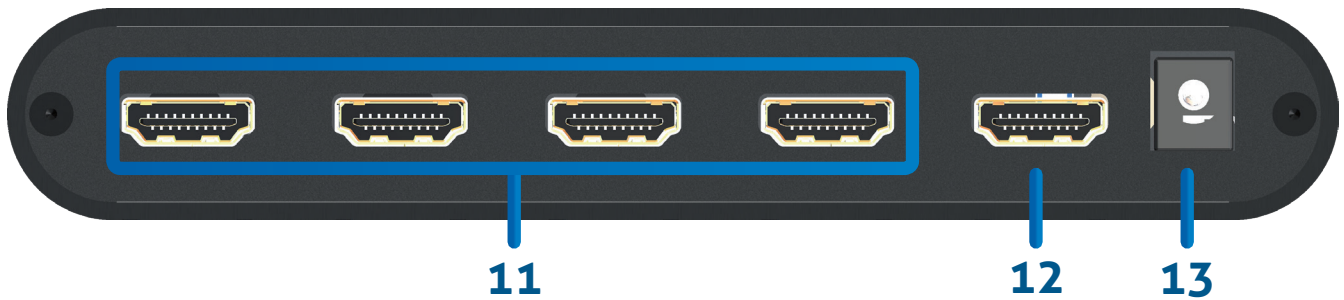
6. Panel Description

Front Panel



- 1. Stereo output (3.5mm)**
- 2. IR SENSOR:** IR sensor for receiving the IR commands from IR remote
- 3. Dip Switch:** [UP] Normal mode; [DOWN] Firmware Update mode
- 4. Micro-USB:** for software control or firmware update
- 5. Source Status LED:** Input source detection LED (from the right to the left is input 1-4)
- 6. One-View Mode :** Switch source in One-View (full screen) mode
- 7. Audio Switch:** Switch stereo audio out from source 1-4 or mute
- 8. Quad-View Cycled Mode:** Switch source in Quad-View Cycled Mode
- 9. Default layout Modes:** Switch 3 default layout modes
Dual-View Mode(left & right), Quad-View Mode, Quad-View H mode
- 10. 1080p/ 720p:** Switch output resolution in 1080p/ 720p

Real Panel

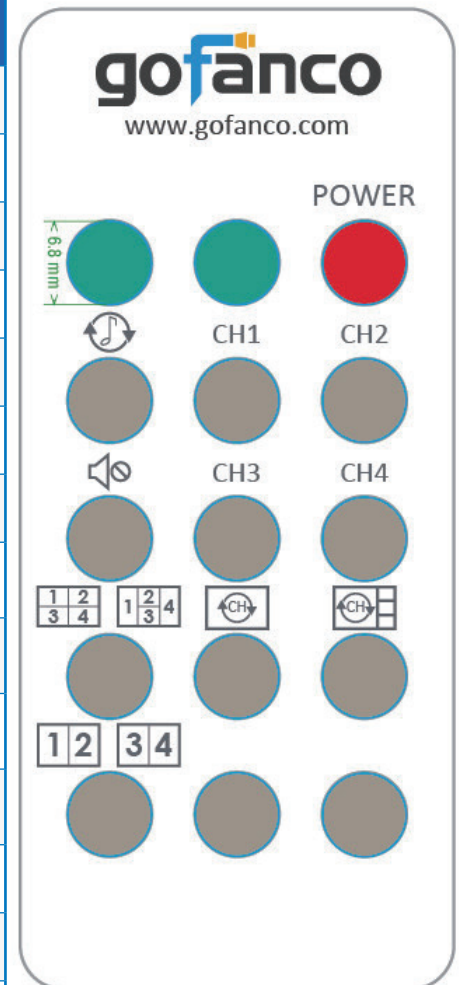


11. **SOURCE 1-4:** HDMI inputs (from the left to the right is input 1-4)
12. **HDMI OUT:** HDMI output
13. **+5V DC:** 5V DC power jack

7. Operation Approach

Method A: IR Remote Control

Button	Function
POWER	Power ON/OFF the device
F1	Reserved
F2	Reserved
CH 1	Input 1 in One-View Mode
CH 2	Input 2 in One-View Mode
CH 3	Input 3 in One-View Mode
CH 4	Input 4 in One-View Mode
	Quad-View mode
	Quad-View H mode
	Dual-View mode (left & right) 1
	Dual-View mode (left & right) 2
	Switch stereo audio from source 1-4
	Audio Mute
	Switch channel in One-View mode
	Switch channel in Quad-View cycled mode



Method B: Software Control through Micro-USB port

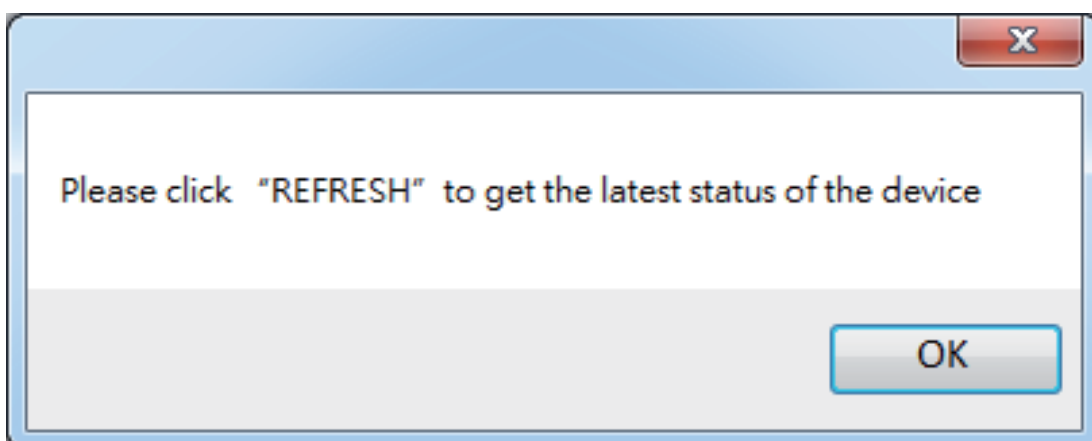
1. System Requirement

- (1) OS information: MS Win XP/7/8/10
- (2) Baud rates: 115200
- (3) Software size: 3KB
- (4) Minimum RAM requirement: 256MB

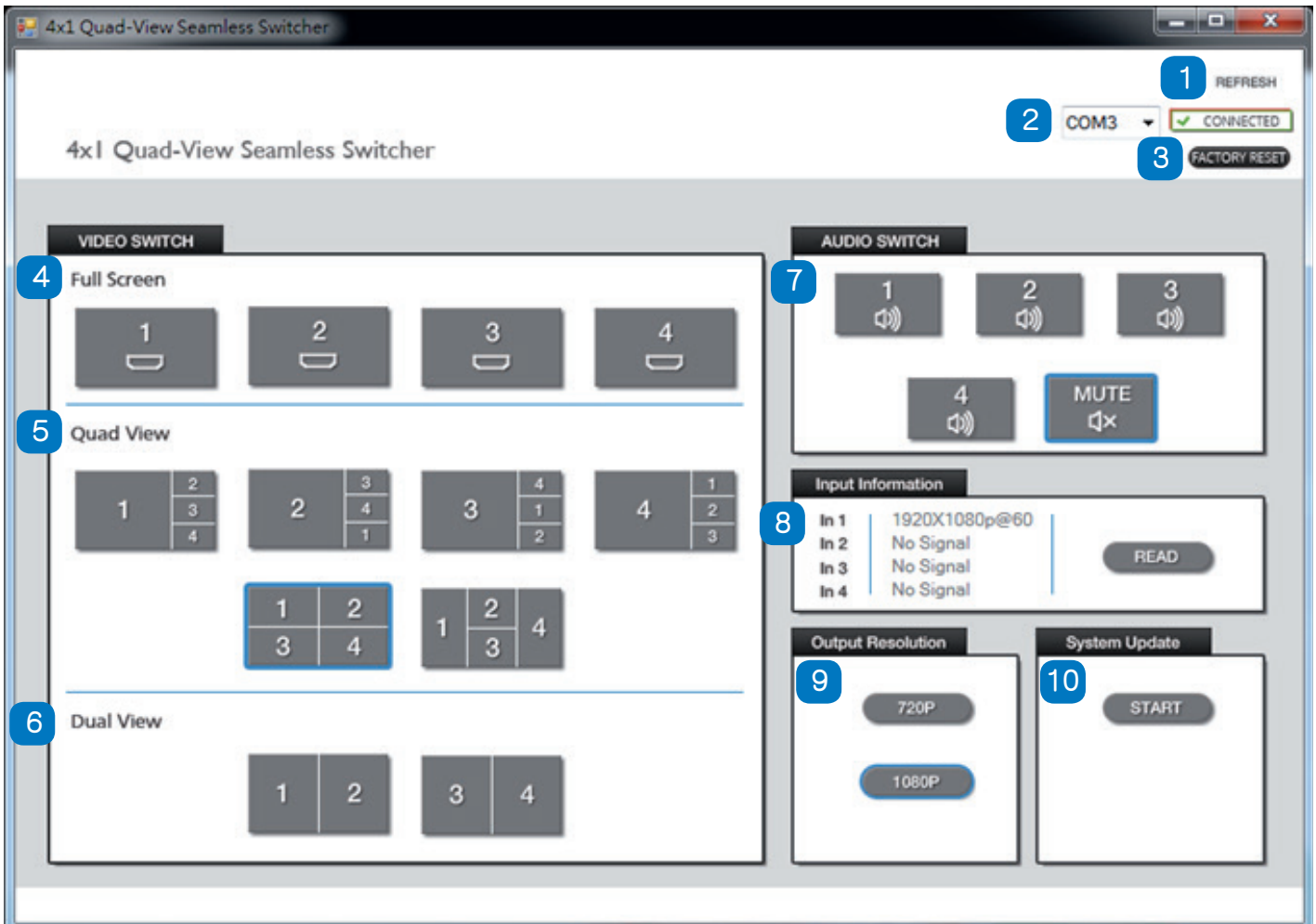
2. Control Interface

Before clicking on the icon of the software, make sure you have secured the connection between your computer COM port and the 4K EDID Emulator.

When clicking on the software control program, the following window will pop-up (under Microsoft Windows 7, please run as administrator.)



After you clicking the OK button, it will enter directly to the control interface (Please click **DISCONNECTED** button to connect the software),



1	Refresh
2	COM Port Selection & Connection Status
3	Factory Reset
4	Video Switch – One-View Mode (Full Screen)
5	Video Switch – Quad-View Mode
6	Video Switch – Dual-View Mode
7	Audio Switch
8	Input Information
9	Output Resolution
10	System Update

(1) Refresh

This button can get all information of the device and update this software state.

(2) COM Port Selection & Connection Status

Please ensure you have secured the connection between your computer COM port and the device. Select correct COM port and click the connection/disconnect button to connect software.

(3) Factory Reset

The process of default reset will take about 10~15 seconds.

(4) Video Switch – One-View Mode (Full Screen)

Select input source in One-View Mode (full screen).

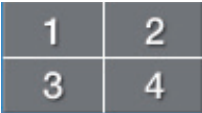
One-View Mode



(5) Video Switch – Quad-View Mode

We provides 3 default Quad-View Mode for user to select different layout modes.

Quad-View Mode



Quad-View cycled Mode



Quad-View H Mode



(6) Video Switch – Dual-View Mode

It has 2 Dual-View layout modes for user to select.

Dual-View Mode



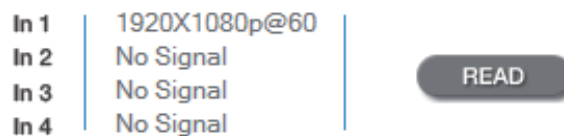
(7) Audio Switch

To set up the audio source of the output (stereo and HDMI).



(8) Input Information

Show the input source resolution. You also can click **READ** button to refresh input resolution information.



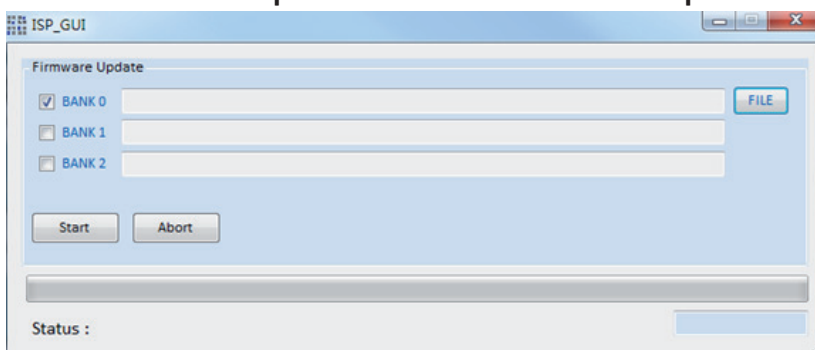
(9) Output Resolution

We provide 2 most common output resolution (1080p & 720p) for user select.

(10) System Update

Before you start to update, please make sure you have secured the connection between your computer COM port and the device.

- Please move the dip switch on F/W mode, and then power cycle the device.
- Click **START** button to do firmware update.
- The firmware update window shows up as below.



- Click **FILE** button to load firmware file.
- Click **Start** button to start firmware update process.
- After updating, please move the dip switch on normal mode and power cycle the device.

8. Limited Warranty

The SELLER warrants the **PRO-QuadView 4x1 HDMI Quad-Viewer & Seamless Switcher** free from defects in the material and workmanship for 1 year from the date of purchase from the SELLER or an authorized dealer. Should this product fail to be in good working order within 1 year warranty period, The SELLER, at its option, repair or replace the unit, provided that the unit has not been subjected to accident, disaster, abuse or any unauthorized modifications including static discharge and power surge. This warranty is offered by the SELLER for its BUYER with direct transaction only. This warranty is void if the warranty seal on the metal housing is broken.

Unit that fails under conditions other than those covered will be repaired at the current price of parts and labor in effect at the time of repair. Such repairs are warranted for 90 days from the day of reshipment to the BUYER. If the unit is delivered by mail, customers agree to insure the unit or assume the risk of loss or damage in transit. Under no circumstances will a unit be accepted without a return authorization number.

The warranty is in lieu of all other warranties expressed or implied, including without limitations, any other implied warranty or fitness or merchantability for any particular purpose, all of which are expressly disclaimed.

Proof of sale may be required in order to claim warranty. Customers outside Taiwan are responsible for shipping charges to and from the SELLER. Cables and power adapters are limited to a 30 day warranty and must be free from any markings, scratches, and neatly coiled.

The content of this manual has been carefully checked and is believed to be accurate. However, The SELLER assumes no responsibility for any inaccuracies that may be contained in this manual. The SELLER will NOT be liable for direct, indirect, incidental, special, or consequential damages resulting from any defect or omission in this manual, even if advised of the possibility of such damages. **Also, the technical information contained herein regarding the 4K EDID Emulator features and specifications is subject to change without further notice.**

Disclaimer

The product name and brand name may be registered trademarks of related manufacturers. TM and ® may be omitted on the user's guide. The pictures on the user's guide are just for reference, and there may be some slight differences with the actual products.

We reserve the rights to make changes without prior notice to a product or system described herein to improve reliability, function, or design.



Thank you for choosing gofanco

www.gofanco.com