

gofanco[®]

PRO-KVMaud4P-RM

4-Port 1080p KVM with Mouse Roaming and USB 3.0 Hub

User's Guide



Congratulations for owning a gofanco product. Our products aim to meet all your connectivity needs wherever you go.

Have fun with our products!

Please read this manual carefully before first use.

If you need more information about our products, please visit www.gofanco.com.

For technical support, please email us at support@gofanco.com.

For drivers/manuals download, please go to <http://www.gofanco.com/download>.

Table of Contents

1. Safety and Notice	3
2. Introduction	4
3. Features	4
4. Package Contents	4
5. Specification	5
6. Connection Diagram	6
7. Panel Description	7
8. Hotkeys	9
9. Firmware Update	10
10. Limited Warranty	13

1. Safety and Notice

Please read all of these instructions carefully before you use the device. Save this manual for future reference.

The **PRO-KVMaud4P-RM 4-Port 1080p KVM with Mouse Roaming and USB 3.0 Hub** has been tested for conformance to safety regulations and requirements, and has been certified for international use. However, like all electronic equipment, the PRO-KVMaud4P-RM should be used with care. Please read and follow the safety instructions to protect yourself from possible injury and to minimize the risk of damage to the unit.

- Follow all instructions and warnings marked on this unit.
- Do not attempt to service this unit yourself, except where explained in this manual.
- Provide proper ventilation and air circulation and do not use near water.
- Keep objects that might damage the device and assure that the placement of this unit is on a stable surface.
- Use only the power adapter and power cords and connection cables designed for this unit.
- Do not use liquid or aerosol cleaners to clean this unit. Always unplug the power to the device before cleaning.

2. Introduction

The **PRO-KVMaud4P-RM 4-Port 1080p KVM with Mouse Roaming and USB 3.0 Hub** provides the most flexible and cost effective solution in the market for multiple computer management at home & office. The KVM switch can control 4 HDMI USB computers by one set of console peripherals (keyboard, mouse & monitor). With built-in USB 3.1 Gen 1 hub, users can share USB peripheral devices between connected computers. Besides, this KVM switch supports a variety of video layouts (5 default modes), seamless switching on one view mode and mouse roaming function.

3. Features

- Input resolution supports 480i/480p/576i/576p/720p/1080i/1080p
- Output resolution supports 1080p@60
- Video bandwidth: 6.75Gbps
- Supports 3 Display Modes: One View, Quad View, Quad View Cycled
- Supports mouse roaming
- Supports built-in 4-port USB 3.1 Gen 1 HUB to share USB devices
- Supports hotkeys
- Plug and Play without any driver needed
- Firmware upgradable for support of new features and technology enhancements
- Supports seamless switching

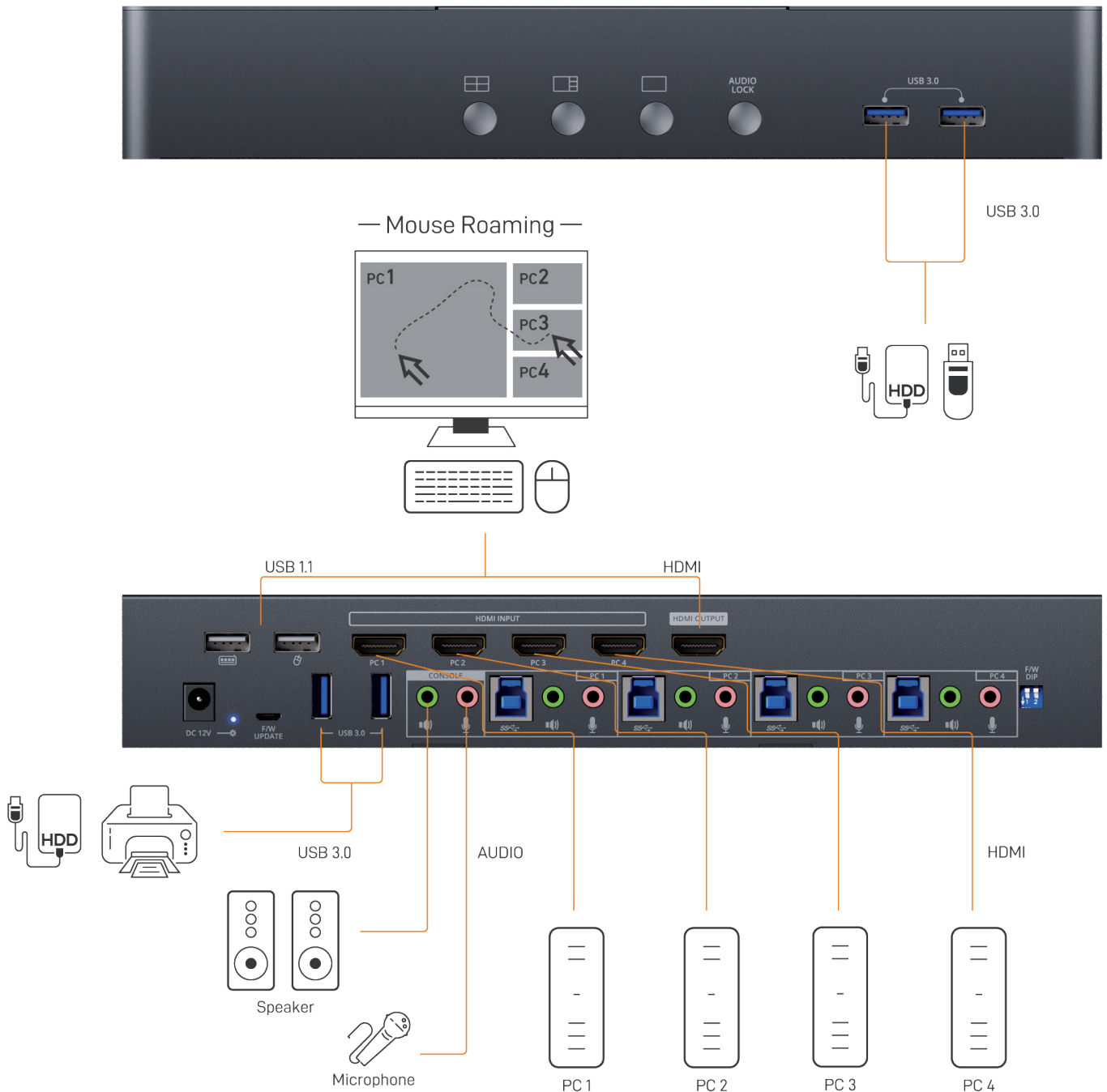
4. Package Contents

- 1x PRO-KVMaud4P-RM
- 1x DC 12V 2A power supply
- 4x 3-in-1 USB host and mic/stereo cable
- 4x HDMI cable
- 1x User Manual

5. Specifications

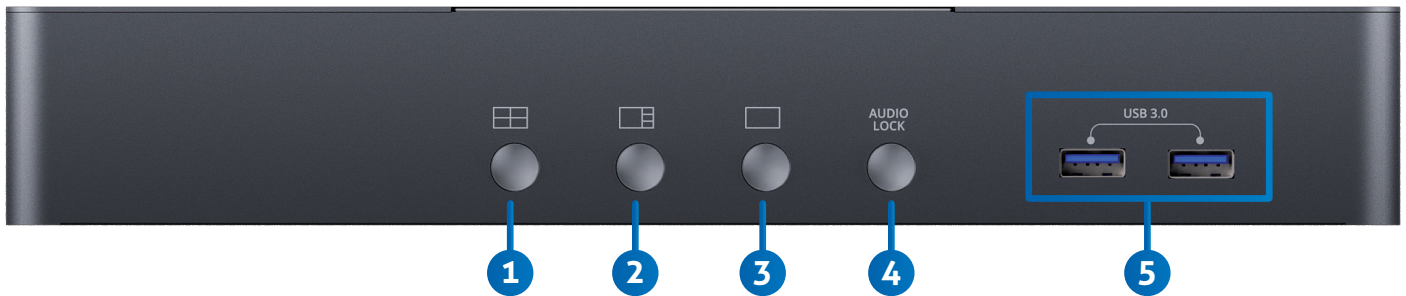
Item	Description	
Technical		
Role of usage	4-Port HDMI Quad-Viewer & Seamless KVM Switch	
HDCP compliance	HDCP 1.4	
Video bandwidth	HDMI [6.75Gbps]	
Output Video Support	1080p60	
Input Video Support	480i/480p/576i/576p/720p/1080i/1080p	
Audio support	Bypass	
ESD protection	Human body model — ±15kV [air-gap discharge] & ±8kV [contact discharge]	
Input	4x HDMI/ 4x USB 3.1 Gen 1(type B)/ 5x 3.5mm phone jack	
Output	1x HDMI/ 4x USB 3.1 Gen 1(type A)/ 2x USB 1.1(type A)/ 5x 3.5mm phone jack	
HDMI connector	Type A [19-pin female]	
USB connector	USB 3.1 Gen 1 type A / type B	
Mechanical		
Housing	Metal enclosure	
Dimensions [L x D x H]	Model	282 x 112 x 44mm [11.1" x 4.4" x 1.7"]
	Package	331 x 162 x 204mm [1' x 6.4" x 8"]
	Carton	500 x 432 x 340mm [1'6" x 1'4" x 1'1"]
Weight	Model	1005g [2.2 lbs]
	Package	2605g [5.7 lbs]
Power supply	12V DC	
Power consumption	12 Watts [max]	
Operation temperature	0~40°C [32~104°F]	
Storage temperature	-20~60°C [-4~140°F]	
Relative humidity	20~90% RH [no condensation]	

6. Connection Diagram



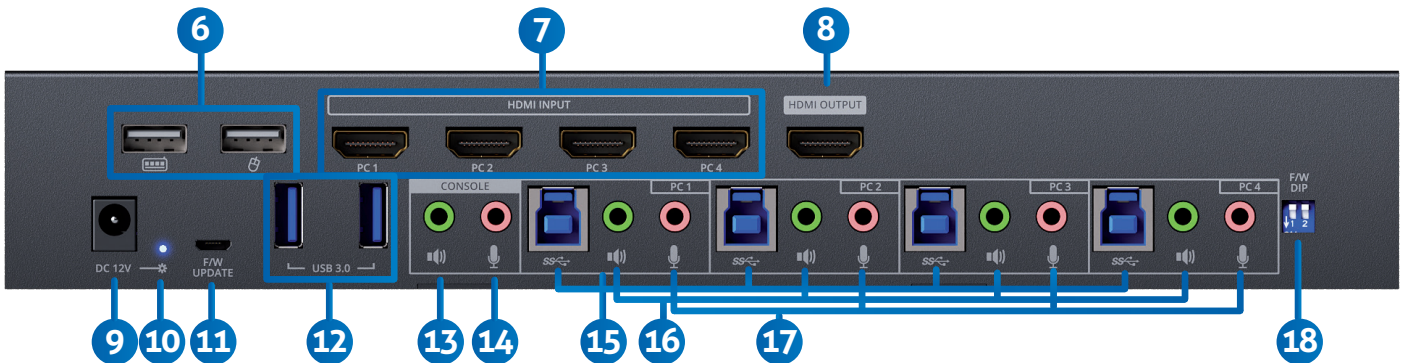
7. Panel Description

Front Panel



1. **Quad View mode 1:** Averaged Quad View
2. **Quad View mode 2:** 1 Main and 3 sub Quad View
3. **One View mode:** Switch source in one view (full screen) mode
4. **KVM Audio lock:** Lock the selected PC stereo audio in/out to console
5. **USB 3.1 Gen 1 Hub:** Connect to USB devices

Rear Panel






- 6. **Console USB Ports:** Connect to keyboard & mouse
- 7. **KVM Video IN 1-4 (HDMI IN 1-4):** Connect the HDMI cable to PC
- 8. **Console Video OUT (HDMI OUT):** Connect the HDMI cable to a display
- 9. **+12V DC:** +12V DC power jack
- 10. **Power Status:** Power indicator LED (LED is on when the KVM is powered on)
- 11. **Micro USB:** For F/W update
- 12. **USB 3.1 Gen 1 Hub:** Connect to USB devices
- 13. **Console Stereo Audio OUT:** Connect to analog stereo audio speaker
- 14. **Console Stereo Audio IN:** Connect to analog stereo audio source
- 15. **KVM USB 3.0(Type B):** Connect the USB cable to PC
- 16. **KVM Stereo Audio IN 1-4:** Connect the stereo cable to PC
- 17. **KVM Stereo Audio OUT 1-4:** Connect the stereo cable to PC
- 18. **2-Pin Dip Switch:** For F/W update

DIP Switch Position				Description
2-Pin				
PIN#1	PIN#2	ON[↓]	OFF[↑]	KVM Firmware Update mode
		ON[↓]	ON[↓]	MCU Firmware Update mode
		OFF[↑]	OFF[↑]	Reserved
		OFF[↑]	ON[↓]	Working mode

8. Hotkeys

Default setting, all of the following commands begin by pressing the [Scroll Lock] or [Ctrl] key twice. Please follow the hotkey command listed below for selecting an operating functions:

Hot key Definition		
[Scroll Lock] + [Scroll Lock] + [NUMBER1~4]	Switch PC 1~4 to HDMI output	
[Ctrl] + [Ctrl] + [NUMBER1~4]		
[Scroll Lock] + [Scroll Lock] + [F1]	Quad view mode 1	
[Ctrl] + [Ctrl] + [F1]		
[Scroll Lock] + [Scroll Lock] + [F2]	Quad view mode 2	
[Ctrl] + [Ctrl] + [F2]		
[Scroll Lock] + [Scroll Lock] + [A] + [Number 1~4]	Under quad view mode, select PC 1~4 Audio to HDMI output	
[Ctrl] + [Ctrl] + [A] + [Number 1~4]		
[Scroll Lock] + [Scroll Lock] + [L] + [A]	Console Stereo Audio out Lock/ Unlock	
[Ctrl] + [Ctrl] + [L] + [A]		
[Scroll Lock] + [Scroll Lock] + [L] + [U]	USB Lock/ Unlock	
[Ctrl] + [Ctrl] + [L] + [U]		
[Scroll Lock] + [Scroll Lock] + [O] + [F] + [F]	Turn off HOTKEY function	
[Ctrl] + [Ctrl] + [O] + [F] + [F]		
[Scroll Lock] + [Scroll Lock] + [O] + [N]	Turn on HOTKEY function	
[Ctrl] + [Ctrl] + [O] + [N]		

* You can use the setting to [Ctrl][Ctrl], if you are using a Mac keyboard or a keyboard that does not have Scroll Lock key

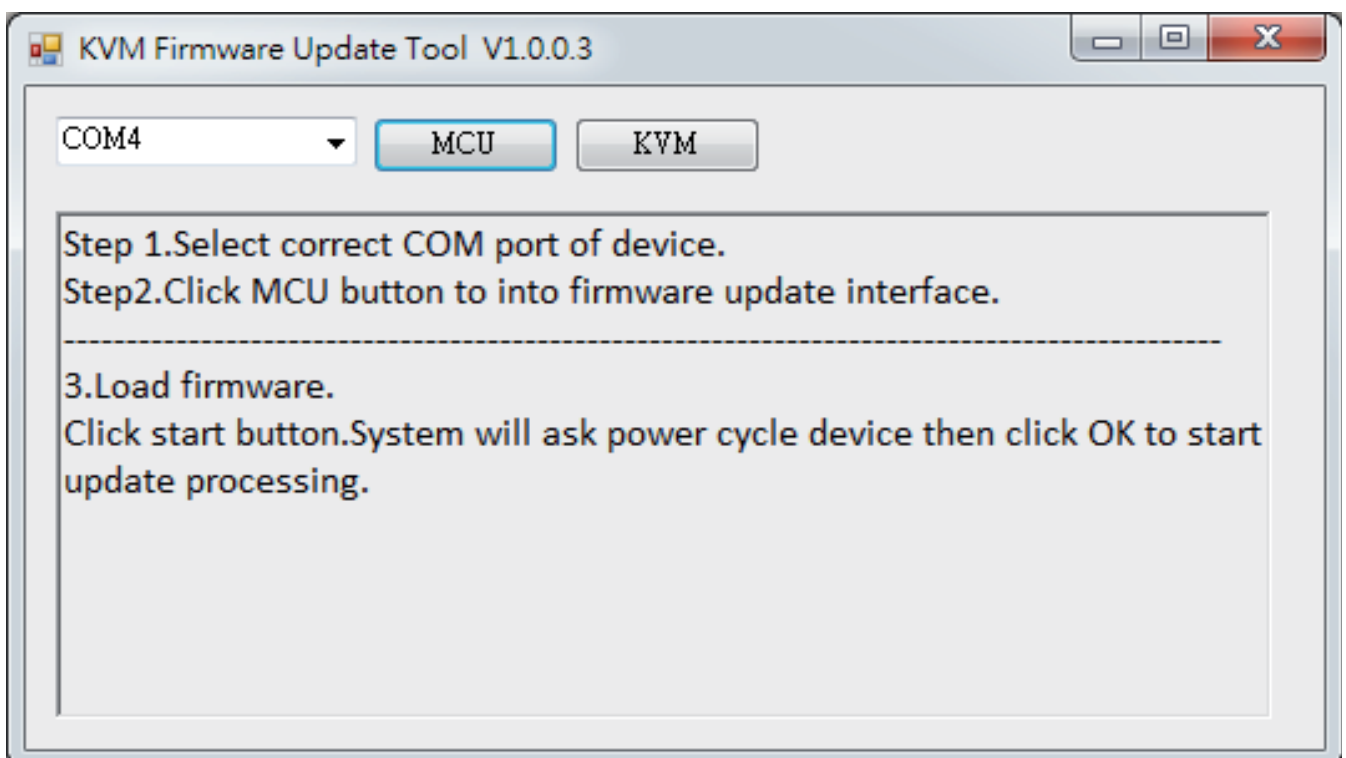
9. Firmware Update


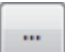
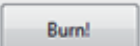
Firmware update is proceeded through Micro-USB.

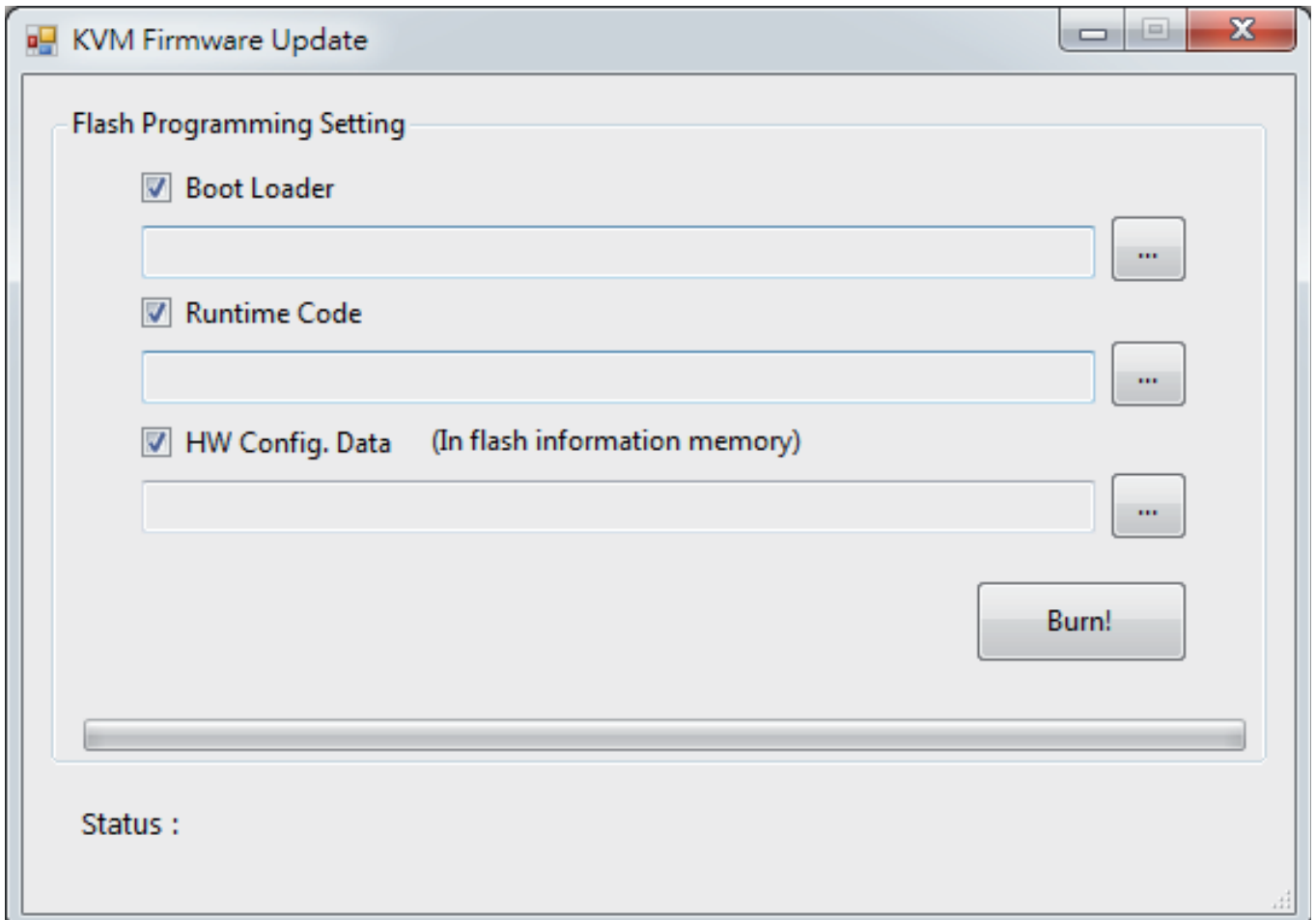
New firmware releases can be downloaded from www.gofanco.com/download, when available. Firmware update is done through Micro-USB port.

KVM Firmware update

1. Connect the Micro-USB to USB cable between PC and device
2. Set dip switch [PIN#1,PIN#2] to [ON[↓], OFF [↑]]and then power on the KVM
3. Open firmware update software and then select COM Port



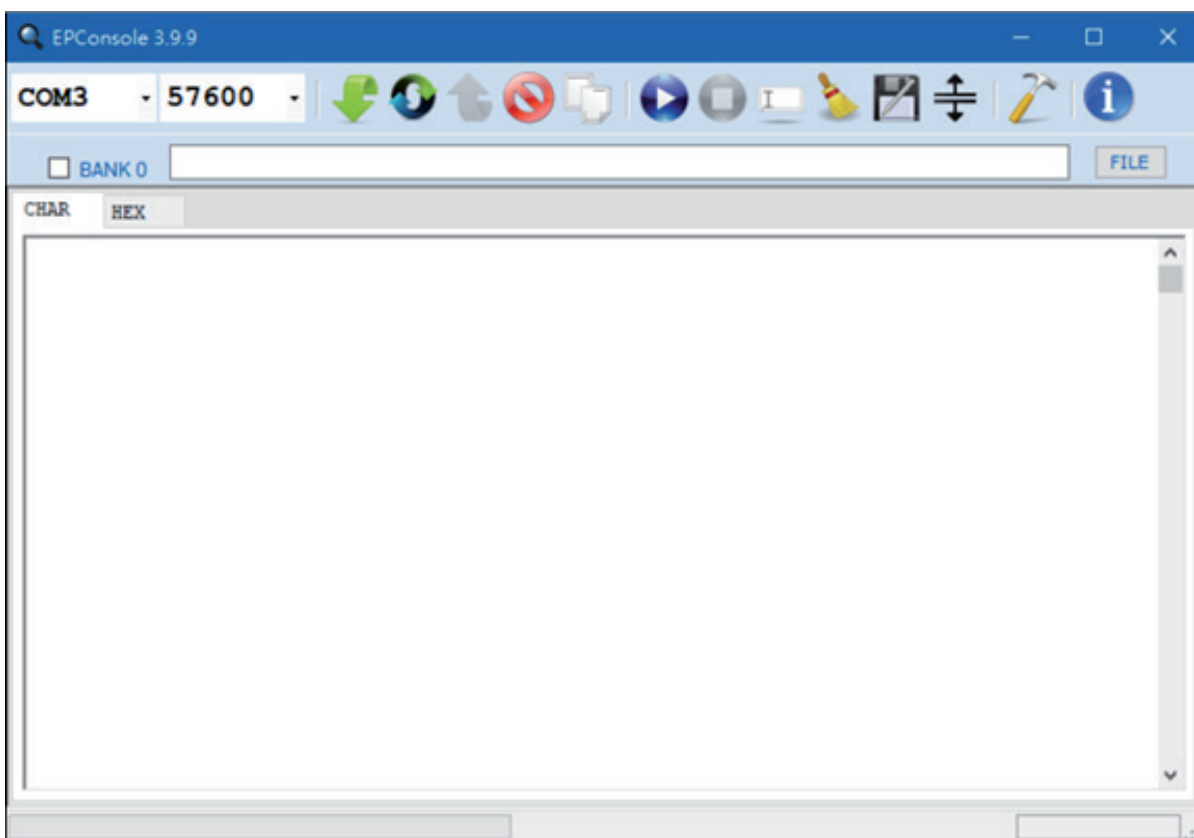
4. Click  button to open "KVM Firmware Update" windows. Check all items and click each  button to select the file which you want to write into device. Click the  button to start firmware update




5. After updating, please set the dip switch [PIN#1,PIN#2] to [OFF [▲],ON[▼]]and power cycle the KVM

MCU F/W update

1. Connect the Micro-USB to USB cable between PC and device
2. Set dip switch [PIN#1,PIN#2] to [ON[↓], ON[↓]]and then power on the KVM
3. Open firmware update software and then select COM Port



4. Click button to load firmware file.
5. Click  button to start firmware update process.
6. After updating, please set the dip switch [PIN#1,PIN#2] to [OFF [↑],ON[↓]] and power cycle the KVM

10. Limited Warranty

The SELLER warrants the **PRO-KVMaud4P-RM 4-Port 1080p KVM with Mouse Roaming and USB 3.0 Hub** free from defects in the material and workmanship for 1 year from the date of purchase from the SELLER or an authorized dealer. Should this product fail to be in good working order within 1 year warranty period, The SELLER, at its option, repair or replace the unit, provided that the unit has not been subjected to accident, disaster, abuse or any unauthorized modifications including static discharge and power surge. This warranty is offered by the SELLER for its BUYER with direct transaction only. This warranty is void if the warranty seal on the metal housing is broken.

Unit that fails under conditions other than those covered will be repaired at the current price of parts and labor in effect at the time of repair. Such repairs are warranted for 90 days from the day of reshipment to the BUYER. If the unit is delivered by mail, customers agree to insure the unit or assume the risk of loss or damage in transit. Under no circumstances will a unit be accepted without a return authorization number.

The warranty is in lieu of all other warranties expressed or implied, including without limitations, any other implied warranty or fitness or merchantability for any particular purpose, all of which are expressly disclaimed.

Proof of sale may be required in order to claim warranty. Customers outside Taiwan are responsible for shipping charges to and from the SELLER. Cables and power adapters are limited to a 30 day warranty and must be free from any markings, scratches, and neatly coiled.

The content of this manual has been carefully checked and is believed to be accurate. However, The SELLER assumes no responsibility for any inaccuracies that may be contained in this manual. The SELLER will NOT be liable for direct, indirect, incidental, special, or consequential damages resulting from any defect or omission in this manual, even if advised of the possibility of such damages. Also, the technical information contained herein regarding the PRO-KVMaud4P-RM features and specifications is subject to change without further notice.

Disclaimer

The product name and brand name may be registered trademarks of related manufacturers. TM and ® may be omitted on the user's guide. The pictures on the user's guide are just for reference, and there may be some slight differences with the actual products.

We reserve the rights to make changes without prior notice to a product or system described herein to improve reliability, function, or design.



Thank you for choosing gofanco

www.gofanco.com