

gofanco®

PRO-KVMaud2Pv2

2-Port HDMI 2.0a/Audio KVM Switch with USB 3.0 HUB

User's Guide



Congratulations for owning a gofanco product. Our products aim to meet all your connectivity needs wherever you go.

Have fun with our products!

Please read this manual carefully before first use.

If you need more information about our products, please visit www.gofanco.com.

For technical support, please email us at support@gofanco.com.

For drivers/manuals download, please go to <http://www.gofanco.com/download>.

Table of Contents

- 1. Safety and Notice 3
- 2. Introduction 4
- 3. Features 4
- 4. Package Contents 4
- 5. Specification 5
- 6. Connection Diagram 6
- 7. Panel Description 7
- 8. Hotkey 8
- 9. Notice 9
- 10. Limited Warranty 11

1. Safety and Notice

Please read all of these instructions carefully before you use the device. Save this manual for future reference.

The **PRO-KVMaud2Pv2 2-Port HDMI 2.0a/Audio KVM Switch with USB 3.0 HUB** has been tested for conformance to safety regulations and requirement, and has been certified for international use. However, like all electronic equipments, the PRO-KVMaud2Pv2 should be used with care. Please read and follow the safety instructions to protect yourself from possible injury and to minimize the risk of damage to the unit.

- Follow all instructions and warnings marked on this unit.
- Do not attempt to service this unit yourself, except where explained in this manual.
- Provide proper ventilation and air circulation and do not use near water.
- Keep objects that might damage the device and assure that the placement of this unit is on a stable surface.
- Use only the power adapter and power cords and connection cables designed for this unit.
- Do not use liquid or aerosol cleaners to clean this unit. Always unplug the power to the device before cleaning.

2. Introduction

The **PRO-KVMaud2Pv2 2-Port HDMI 2.0a/Audio KVM Switch with USB 3.0 HUB** provides the most flexible and cost effective solution in the market for multiple computer management at home & office. The KVM switch can control 2 HDMI USB computers by one set of console peripherals (keyboard, mouse & monitor). With built-in USB 3.0 hub, users can share USB peripheral devices between connected computers. Besides, this KVM switch also supports HDR and the true 4K2K video.

3. Features

- HDMI 2.0a compliant
- Supports 4K2K@60 4:4:4 8bits, Video bandwidth 18Gbps
- Supports HDR, which is 4K2K@60 4:2:0 10bits
- HDCP 2.2 and 1.4 compliant
- Supports separate line input and output
- Plug and Play without any driver needed
- Supports built-in 4-port USB 3.0 HUB to share USB devices
- Supports independent HID keyboard & mouse ports
- Supports hotkeys function
- Supports Dolby Digital PLUS, DTS-HD and Dolby TrueHD audio
- Supports default HDMI EDID and learns the EDID from displays
- Firmware upgradable

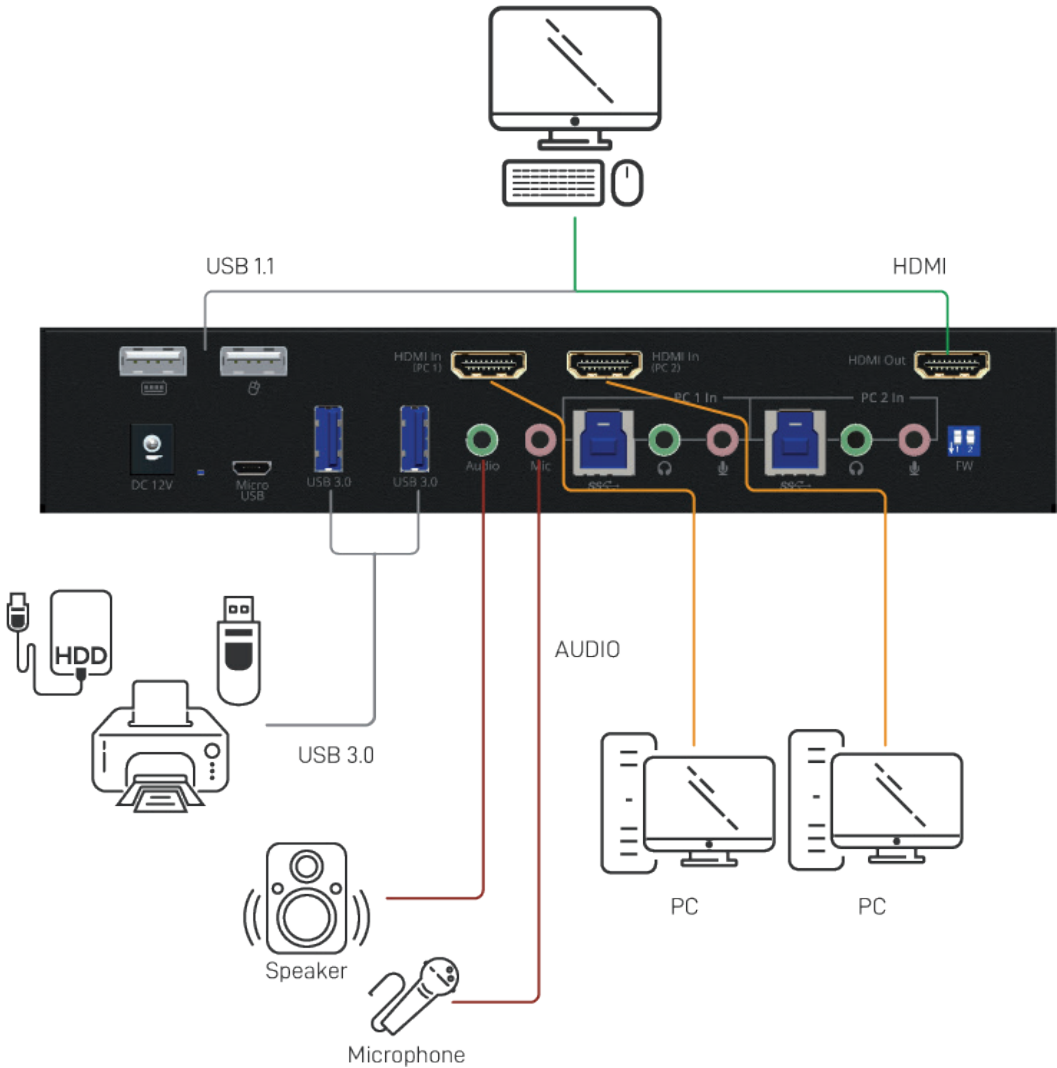
4. Package Contents

- 1x PRO-KVMaud2Pv2
- 1x DC 12V 2A power supply
- 2x 3-in-1 USB host and mic/stereo cable
- 2x HDMI cable
- 1x User Manual

5. Specifications

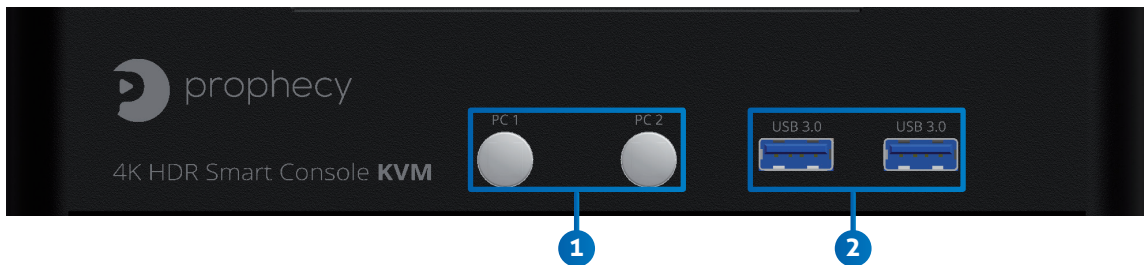
Item		Description
Technical		
Role of usage	2-Port HDMI KVM Switch	
HDMI compliance	HDMI 2.0a, 3D & 4K2K@60Hz	
HDCP compliance	Up to HDCP 2.2	
Video bandwidth	Single-link 594MHz [18Gbps]	
Video support	Up to HDR 4K2K@60(4:2:0 10bits) / 4K2K@60 (4:4:4 8bits)	
Audio support	Surround sound (up to 7.1ch) or stereo digital audio	
ESD protection	Human body model — ±15kV [air-gap discharge] & ±8kV [contact discharge]	
Input	2x HDMI, 2x USB 3.0(type B), 3x 3.5mm phone jack	
Output	1x HDMI, 4x USB 3.0(type A), 2x USB 1.1(type A), 3x 3.5mm phone jack	
HDMI connector	Type A [19-pin female]	
USB connector	USB 3.0 type A / type B	
Mechanical		
Housing	Metal enclosure	
Dimensions [L x D x H]	Model	202 x 112 x 37mm [8" x 4.4" x 1.5"]
	Package	331 x 162 x 204mm [1' x 6.4" x 8"]
	Carton	500 x 432 x 340mm [1'6" x 1'4" x 1'1"]
Weight	Model	720g [1.6 lbs]
	Package	1144g [2.5lbs]
Power supply	12V 2A DC	
Power consumption	6 Watts [max]	
Operation temperature	0~40°C [32~104°F]	
Storage temperature	-20~60°C [-4~140°F]	
Relative humidity	20~90% RH [no condensation]	

6. Connection Diagram



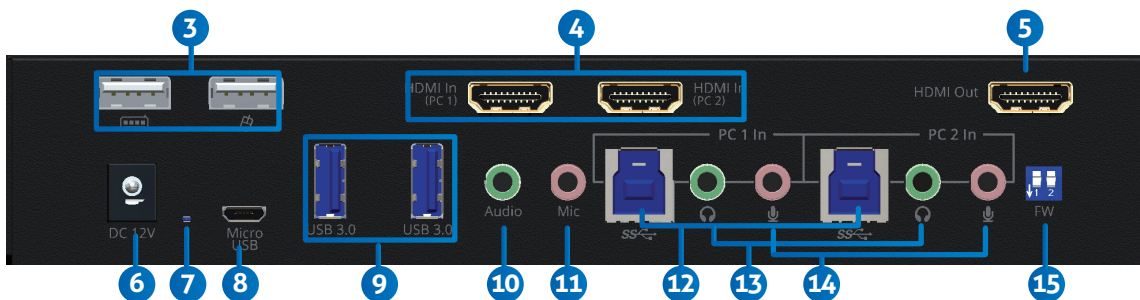
7. Panel Description

Front Panel



1. **Port 1-2 Selection Push Button:** Switch between computers
2. **USB 3.0 Hub:** Connect to USB devices

Rear Panel



3. **Console USB Ports:** Connect to keyboard & mouse
4. **KVM Video IN 1-2 (HDMI IN 1-2):** Connect the HDMI cable to PC
5. **Console Video OUT (HDMI OUT):** Connect the HDMI cable to a display
6. **+12V DC:** +12V DC power jack
7. **Power Status:** Power indicator LED
8. **Micro USB:** For F/W update
9. **USB 3.0 Hub:** Connect to USB devices
10. **Console Stereo Audio OUT:** Connect to analog stereo audio speaker
11. **Console Stereo Audio IN:** Connect to analog stereo audio source
12. **KVM USB 3.0 (Type B):** Connect the USB cable to PC
13. **KVM Stereo Audio IN 1-2:** Connect the stereo cable to PC
14. **KVM Stereo Audio OUT 1-2:** Connect the stereo cable to PC
15. **2-Pin Dip Switch:** For F/W update

Position	Description	
PIN#1	OFF[↑]	Working mode
	ON[↓]	KVM Firmware Update mode
PIN#2	OFF[↑]	Working mode
	ON[↓]	MCU Firmware Update mode

8. Hotkey

Default setting, all of the following commands begin by pressing the [Scroll Lock] key twice. Please follow the hotkey command listed below for selected operating functions:

Hot key Definition	
[Scroll Lock] + [Scroll Lock] + [Ctrl] + [Enter]	Change [Scroll Lock] [Scroll Lock] to [Ctrl] [Ctrl] *
[Ctrl] + [Ctrl] + [Scroll Lock] + [Enter]	Change [Ctrl] [Ctrl] to [Scroll Lock] [Scroll Lock]
[Scroll Lock] + [Scroll Lock] + [NUMBER1~2] + [Enter]	Switch input 1~2 source to output
[Scroll Lock] + [Scroll Lock] + [S]	Auto Scan/ Exit Auto Scan mode**
[Scroll Lock] + [Scroll Lock] + [I] + [N] + [Enter]	Auto Scan Set [N]: 5~599 ***
[Scroll Lock] + [Scroll Lock] + [+]	Auto Scan Interval Add 5 Seconds
[Scroll Lock] + [Scroll Lock] + [-]	Auto Scan Interval Subtract 5 Seconds

* You can change the default setting to [Ctrl] [Ctrl], if you are using a Mac keyboard or a keyboard that does not have Scroll Lock key

** Auto scan through each channel for quick screen browsing (default = 15 seconds)

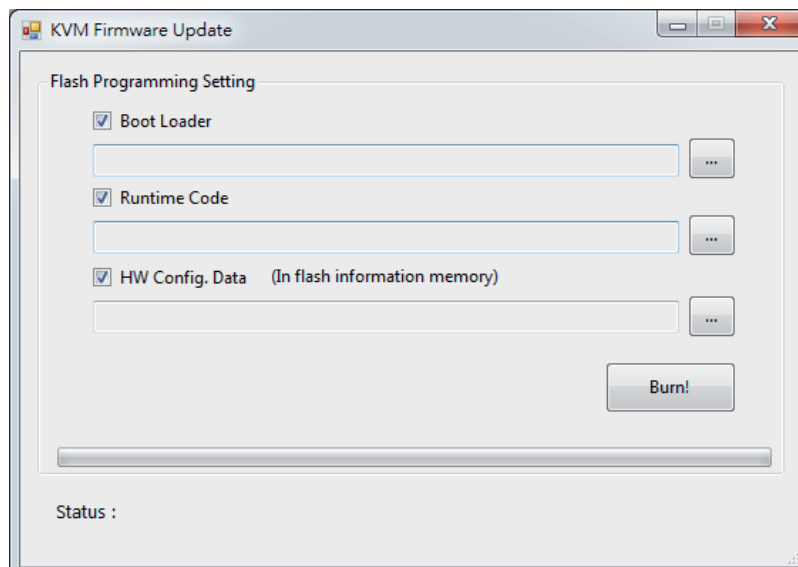
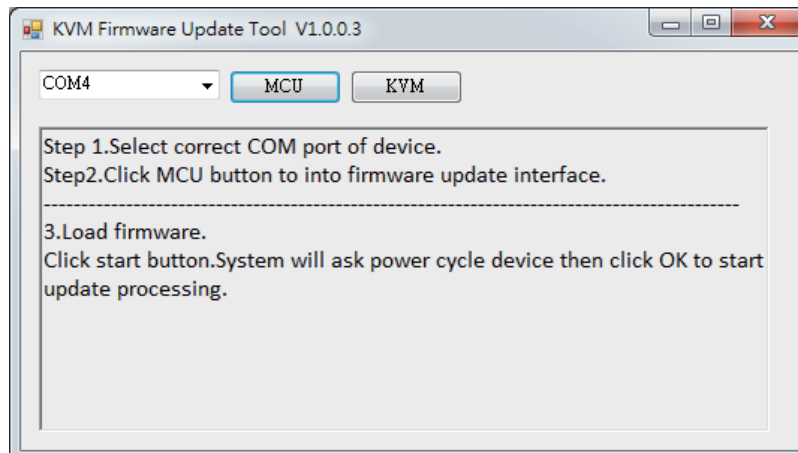
*** You can set the auto scan interval according to the steps. (N = Number, 5~599)

9. Firmwawe update

Firmware update is proceeded through Micro-USB

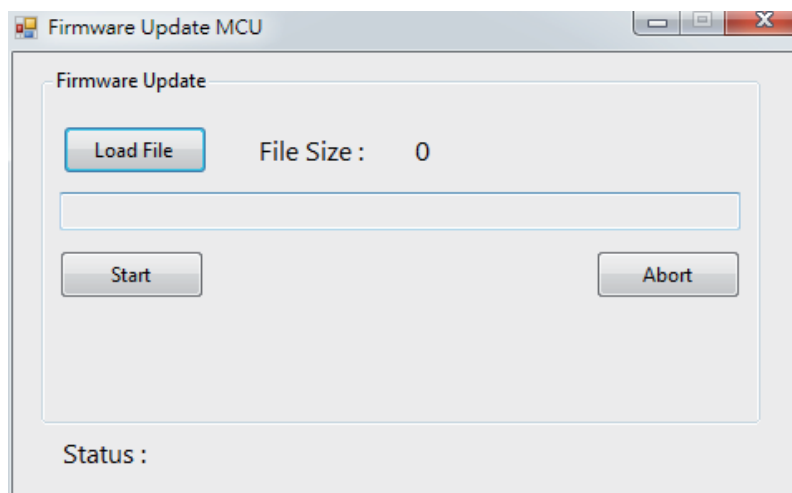
KVM F/W update

1. Connect the Micro-USB to USB cable between PC and device
2. Set dip switch PIN#1 to ON[↓] and then power on device
3. Open firmware update software and then select COM Port
4. Click "KVM" button to open "KVM Firmware Update" windows.
5. Check all items and click each "..." button to select the file which you want to write into device.
6. Click the "Burn!" button to start firmware update
7. After updating, please set the dip switch PIN#1 to OFF[↓] and power cycle the device



MCU F/W update

1. Connect the Micro-USB to USB cable between PC and device
2. Set dip switch PIN#2 to ON[↓] and then power on device
3. Open firmware update software and then select COM Port
4. Click "MCU" button to open "Firmware Update MCU" windows.
5. Click "Load File" button to select the file which you want to write into device.
6. Click the "Start" button to start firmware update
7. After updating, please set the dip switch PIN#2 to OFF [↑] and power cycle the device



10. Limited Warranty

The SELLER warrants the **PRO-KVMaud2Pv2 2-Port HDMI 2.0a/Audio KVM Switch with USB 3.0 HUB** free from defects in the material and workmanship for 1 year from the date of purchase from the SELLER or an authorized dealer. Should this product fail to be in good working order within 1 year warranty period, The SELLER, at its option, repair or replace the unit, provided that the unit has not been subjected to accident, disaster, abuse or any unauthorized modifications including static discharge and power surge. This warranty is offered by the SELLER for its BUYER with direct transaction only. This warranty is void if the warranty seal on the metal housing is broken.

Unit that fails under conditions other than those covered will be repaired at the current price of parts and labor in effect at the time of repair. Such repairs are warranted for 90 days from the day of reshipment to the BUYER. If the unit is delivered by mail, customers agree to insure the unit or assume the risk of loss or damage in transit. Under no circumstances will a unit be accepted without a return authorization number.

The warranty is in lieu of all other warranties expressed or implied, including without limitations, any other implied warranty or fitness or merchantability for any particular purpose, all of which are expressly disclaimed.

Proof of sale may be required in order to claim warranty. Customers outside Taiwan are responsible for shipping charges to and from the SELLER. Cables and power adapters are limited to a 30 day warranty and must be free from any markings, scratches, and neatly coiled.

The content of this manual has been carefully checked and is believed to be accurate. However, The SELLER assumes no responsibility for any inaccuracies that may be contained in this manual. The SELLER will NOT be liable for direct, indirect, incidental, special, or consequential damages resulting from any defect or omission in this manual, even if advised of the possibility of such damages. **Also, the technical information contained herein regarding the PRO-KVMaud2Pv2 features and specifications is subject to change without further notice.**

Disclaimer

The product name and brand name may be registered trademarks of related manufacturers. TM and ® may be omitted on the user's guide. The pictures on the user's guide are just for reference, and there may be some slight differences with the actual products.

We reserve the rights to make changes without prior notice to a product or system described herein to improve reliability, function, or design.



Thank you for choosing gofanco

www.gofanco.com